

DOLPHIN

Decision Making Support at the Staff level

EFFECTIVE DATA PREPARATION, PROCESSING, SHARING AND DISTRIBUTION WITHIN THE COMMAND POSTS OR AMONG THEM.

The subsystem of **ICZ DELINFOS®** dedicated to support command and control on the workstations within the LAN on the command posts of the Ground Force units.

[OPERATIONAL DESCRIPTION]

DOLPHIN is a Tool for Decision Making Support which helps all branches in Land Forces to plan, control and command their operations. **DOLPHIN** is developed according to Military Decision Making Process (MDMP).

[OPERATIONAL CAPABILITIES]

DOLPHIN is the system fully interoperable in both directions – vertical and horizontal – in chain of command. Data are shared in one interoperable database, which is based on JC3IEDM (STANAG 5525). This database can be extended according to national specification as well.

It can be also characterized as the system, which helps staff to keep overview of running missions through particular recognised pictures and also to continue in planning future operations and missions.



FEATURES

- ▶ Tools for Decision Making Support
- ▶ Artillery, CBRN, Intelligence, Engineering, CIS, Medical and other applications
- ▶ Information Exchange/Sharing
- ▶ C4ISTAR capability support
- ▶ MDMP
- ▶ Interoperability Solutions via MIP 3.1 and 4, NVG, NFFI, JREAP, ADatP-3
- ▶ Alert management
- ▶ Chat, Messaging
- ▶ Situational Awareness
- ▶ Aided C2 through SWORD simulator
- ▶ Recognized Picture provision



[**BENEFITS – PLANS AND ORDERS**]

DOLPHIN uses predefined Operational Information Group (OIG) for battlefield information exchange. For example the distribution of Plans and Orders facilitates staff work in national and in international environment as well.

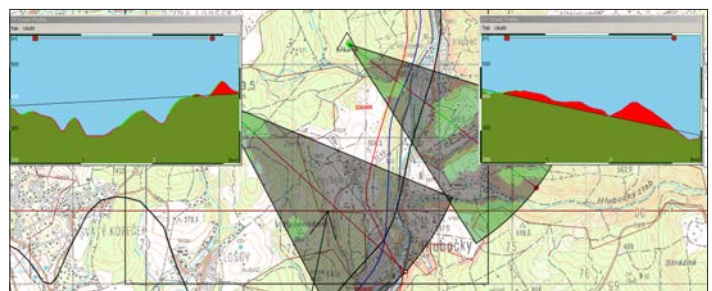
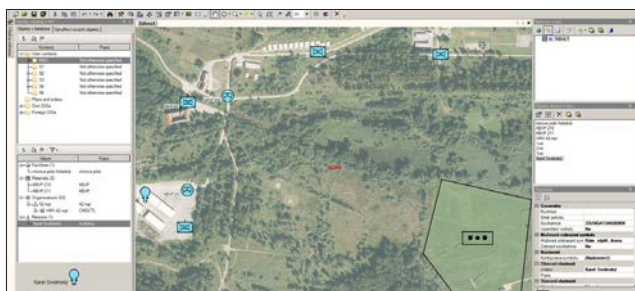
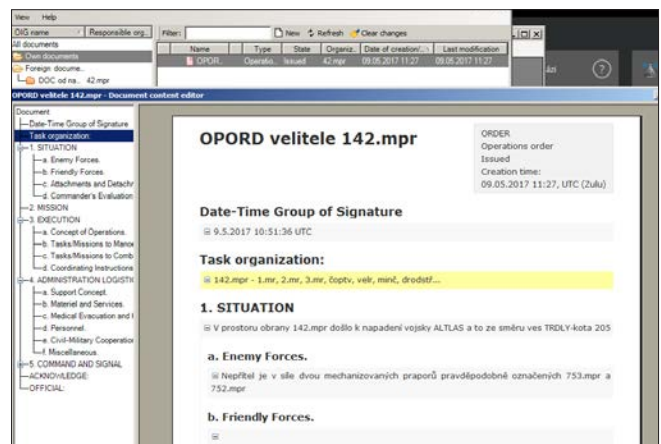
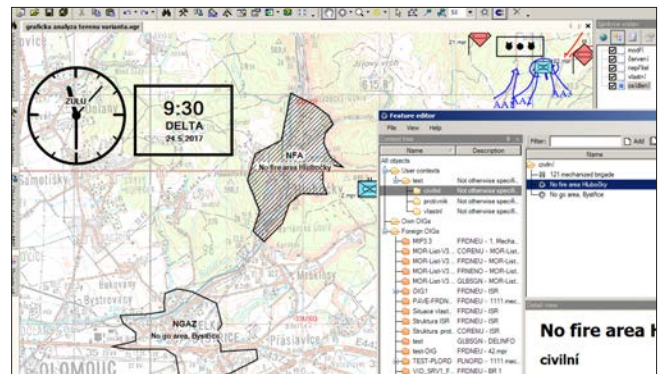
[**BENEFITS – APPLICATIONS**]

DOLPHIN consists of several applications, which help staff to plan operation as well as control it. Typical examples are NBC visualisation, Optical and Radio visibility, 3D-display arena, Power ratio calculation, Operation Journal, overview of Battlefield Objects etc.

[**BENEFITS – COMMON OPERATIONAL PICTURE CAPABILITY**]

DOLPHIN integrates and creates the separated recognised pictures as:

- Recognised Air Picture
- Recognised Ground Picture
- Recognised Intelligence Picture
- Recognised Engineer Picture
- Recognised Environmental Picture



CONTACTS

DELINFO, spol. s r.o.

MEMBER OF ICZ GROUP

Adress: Londynske namesti 856/2
 639 00 Brno Styrice, Czech Republic
 Phone: +420 222 272 111
 Email: delinfo@i.cz, delinfo@delinfo.cz
 Web: www.iczgroup.com, www.delinfo.cz